



ASHLYNS SCHOOL



ASHLYNS SCHOOL

Teacher of Science

Information for Candidates



Welcome from the Headteacher

Ashlyns is a popular and oversubscribed school with in excess of 1500 students including a growing and successful Sixth Form.

The school was rated 'Good' by Ofsted in October 2023, with an 'Outstanding' Sixth Form.

It's our aim that work and study should be joyful; the staff and students at Ashlyns help to create the atmosphere for this to happen. There is a palpable sense of community, professionalism and a culture of high expectations, all of which are underpinned by ethical leadership.

We are a thriving school with a rich heritage. Originally established for the most vulnerable in society, our focus on helping all students to be the very best versions of themselves is central to all we do.

I hope the information here and on our website will give you an insight into our school – the high aspirations, excellent support and opportunities for our students and staff, the scope of the role and the kind of person we are looking for.

If you want to provide outstanding learning opportunities and exceptional pastoral care for students within a forward-thinking, hard-working school community, we would like to hear from you.

We welcome visits from prospective candidates prior to application. We look forward to hearing from you and welcoming you to our school.

James Shapland, Headteacher

Independence

Inclusivity

Integrity



Character Education at Ashlyns School

We have a commitment to character education and we put our values of Integrity, Inclusivity and Independence at the heart of all we do.

Integrity: we act with respect, honesty, courage and justice

Inclusivity: we play our part in the social contract with kindness, service, empathy and gratitude

Independence: we strive to meet our potential with resilience, determination, self reflection and self discipline

All members of the Ashlyns' community are expected to demonstrate these values and play their part in fostering a positive and enriching environment for everyone. We look forward to welcoming staff members who will exemplify these values in their and serve as genuine role models for our students.



Working at Ashlyns School

Ashlyns School is located in the market town of Berkhamsted in south west Hertfordshire. The town is surrounded by Chiltern countryside and within easy reach of London and commutable from many nearby towns including Aylesbury, Hemel Hempstead, Luton, St Albans and Watford.

Our school is a well resourced, exciting environment. Our systems provide flexible working and a truly collaborative culture. As well as joining an experienced and close-knit team, there are other benefits that come with working at Ashlyns:

Health

- Free use of on-site gym with weekly staff fitness sessions
- Wellbeing (free access to mental health support, physiotherapy etc.)
- Free annual flu jab
- Dedicated and active Staff Wellbeing/Social Team (with leadership focus on teacher workload)

- Excellent staff facilities (ample on-site parking, large staff room, departmental offices)
- Staff Occasional Day (school usually schedules this annually)

Wealth

- London fringe allowance payscale
- Paid lunch duty available plus lunch allowance
- Herts Reward Scheme (savings at supermarkets, on leisure activities etc.)
- Cycle to work scheme

Family

- Children of Staff Admission Rule

Support

- A talented team of support staff who provide expert, whole school support (including Administrators, TAs, Premises Staff, Mentors and Technicians)



Personal and Professional Standards

The school is committed to safeguarding and promoting the welfare of children and young people and expects all staff and volunteers to share this commitment:

- To support the school's aims, ethos and values
- To set a good example in terms of professional dress and appearance, punctuality and attendance
- Take responsibility for personal development making full use of the school's professional development opportunities and training
- To attend team and staff meetings as appropriate, contributing actively whenever possible
- To provide courteous, prompt and polite service to all members of the school's community including parents, students, all staff and visitors
- To actively contribute to the school's mission statement by forming positive relationships within the school community and working collaboratively and in good humour with other colleagues as appropriate or when directed
- Be aware and comply with all relevant policies and procedures within the school, particularly those relating to child protection, equality, health and safety, staff code of conduct and confidentiality. It is the duty of all colleagues to report breaches of school policies or procedures to the Headteacher.

Science at Ashlyns

Science at Ashlyns School: The Science Faculty has a team of dedicated and experienced teachers supported by an excellent technical team, housed in specialist science laboratories and a separate science block.

Courses are well resourced and we work as a supportive team. Students are motivated and obtain the full range of grades with Sixth Form students going to take Sciences and Engineering at Russell Group universities, as well as apprenticeships and vocational courses.

Learning in Science at Ashlyns

In Science at Ashlyns, we aim to promote a healthy curiosity in our learners of the natural world and to encourage them to use enquiry to develop a deeper understanding of Science.

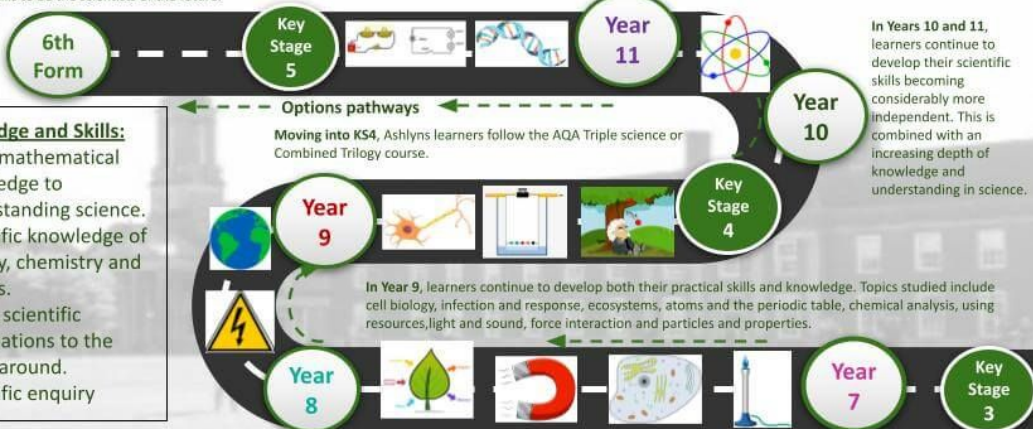
At KS5, learners are able to study sciences. This covers a variety of topics from Biology, Chemistry, Physics and Psychology. Through these we aim to create independent learners with the skills to be the scientists of the future.

Topics studied include animal organisation, respiration, reproduction and DNA, Energy changes, bonding and structure, rates of reaction, radiation, energy and work and waves.

In Years 10 and 11, learners continue to develop their scientific skills becoming considerably more independent. This is combined with an increasing depth of knowledge and understanding in science.

Core Knowledge and Skills:

- Apply mathematical knowledge to understanding science.
- Scientific knowledge of biology, chemistry and physics.
- Relate scientific explanations to the world around.
- Scientific enquiry



Moving into KS4, Ashlyns learners follow the AQA Triple science or Combined Trilogy course.

In Year 9, learners continue to develop both their practical skills and knowledge. Topics studied include cell biology, infection and response, ecosystems, atoms and the periodic table, chemical analysis, using resources, light and sound, force interaction and particles and properties.

In Year 8, learners continue to develop both their practical skills and knowledge. Topics studied include photosynthesis, diet, digestion and respiration, electricity, energy, patterns and Earth and rocks.

In Year 7, learners are introduced to the skills needed to work safely in a science laboratory. They continue to develop their knowledge with topics that include cells, variation and adaptation, elements, mixtures and compounds, separating mixtures, space and forces.

Job Description

Teacher of Science

Main (Core) Duties

Teaching and Learning

- Carry out teaching duties in accordance with the school's schemes of work and defined in the National Curriculum
- Plan and deliver lessons and other learning activities in accordance with the school's Teaching and Learning Policy
- Liaise with other colleagues to deliver units of work in a collaborative way and contribute to the production and preparation of schemes of work (this contribution reflecting the post holder's level of responsibility)
- Work closely with teaching and other support assistants in delivering "personalised learning" whenever reasonably possible
- Set targets for student attainment levels (using prior data provided)
- Set work for students absent from lessons in line with the school's behaviour and teaching policies
- Within the PM framework, work towards or maintain the teaching standards applicable (see documentation in PM material)

Assessment and Recording

- Record attainment and effort marks, homework set, student attendance and lesson plans
- Mark and return work (using the school's marking and assessment policy) on a regular basis and at least once every 2 teaching weeks. Marking should include feedback for improvement and progress for each student
- Provide assessment reports when periodically required with the school's assessment cycle and additional "round robin" reports when specifically requested
- Ensure that suitably adapted material and learning pathways are provided to challenge all students, regardless of their ability
- Liaise with parents on students' progress using the school diary system, letters, telephone and consultation evenings where reasonable and appropriate
- Work within the code of practice relating to special educational needs

Job Description

Teacher of Science

Professional Standards

- Support the aims and ethos of the school as defined in the staff handbook and school prospectus
- Set a good example in terms of professional dress and appearance, punctuality and attendance
- Uphold the school's behaviour policy, uniform regulations and code of conduct in a consistent, firm and non-confrontational manner
- Maintain a purposeful and calm atmosphere in the classroom and other learning areas and consistently apply the school's prescribed sanctions and rewards procedures
- To carry out suitable evaluation and analysis of examination results and performance at the beginning of the academic year (see PA documentation) and provide a suitable summative report indicating achievements and corrective actions which might subsequently follow
- As a consequence of the PA cycle, take responsibility for personal development and progression making full use of the school's professional development opportunities and training (refer to "Investors in People" documentation for more detailed information)
- Attend team and staff meetings as appropriate, contributing actively whenever possible

Additional Duties

- To play a full part in the life of the school community, to support its distinctive mission and ethos and to encourage and ensure staff and students to follow this example
- This position will also involve taking on other appropriate roles and duties as and when directed by the Headteacher

The duties outlined in this job description reflect and develop those covered by the latest School Teachers' Pay and Conditions document. Job descriptions are subject to review and amendment. This job description may be amended at any time following discussion with the Headteacher and is to be reviewed periodically. Expected "standards" to be reached and maintained are clearly defined within the school's Performance Appraisal (PA) documentation and should be referred to regularly for further clarification and specific detail.

Person Specification

Teacher of Science

	Essential	Desirable
Qualifications	QTS	<ul style="list-style-type: none">● Good Honours Degree● Further professional qualifications
Knowledge and Skills	<ul style="list-style-type: none">● Knowledge of the National Curriculum● Able to use a range of strategies to promote learning● Able to manage and encourage good behaviour● Able to develop positive and meaningful relationships with students● Able to make appropriate use of ICT for learning● Understanding of how to use data to inform planning and improve students' performance● Understanding of a range of assessment for learning approaches, including grades where appropriate● Able to communicate with students, parents and carers about students' progress● A willingness and commitment to contribute fully to the extra-curricular programme	<ul style="list-style-type: none">● Understanding of how to use data to inform planning and improve students' performance● Able to develop best practice through wide range of imaginative approaches● Able to create an excellent climate for learning within teaching area● Able to engage with developments in teaching and learning strategies to raise achievement
Personal Qualities	<ul style="list-style-type: none">● Enthusiasm● Team-working skills● Reliability and Integrity● Personal Organisation● Flexibility● Integrity	<ul style="list-style-type: none">● Strategic Planning● Motivational Skills● Willingness to take on delegated responsibility● Interest in new developments and challenges for the subject● Innovative and creative approach to all aspects of the job role

Application and Next Steps

Please complete the online application form via the 'apply for this job' button on [Teach in Herts](#) (you will be required to set up a profile and also submit a covering letter).

We do not accept CVs. Prospective candidates are encouraged to submit their applications as early as possible as the school reserves the right to make an appointment before the closing date.

If you have any queries about the application process, or if you would like to arrange a visit to look around the school, please do not hesitate to contact Clare Richardson, HR Officer: hr@ashlyns.herts.sch.uk.

If you are shortlisted, your references will be taken up before the interview day. We will carry out an online search as part of our due diligence on shortlisted candidates. This post is exempt from the Rehabilitation of Offenders Act 1974; shortlisted candidates will be asked to complete a Criminal Records Self-Declaration Form.

Ashlyns School is committed to safeguarding children and promoting the welfare of children and young people and expects all staff and volunteers to share this commitment. All successful candidates will be subject to an Enhanced Criminal Records Disclosure from the Disclosure and Barring Service, along with other relevant employment checks, including overseas criminal background checks, where applicable. All new employees and volunteers will be required to undertake safeguarding training on induction which will be updated regularly in line with statutory guidance.

Please view our [Safer Recruitment Policy](#), [Child Protection Policy](#) and [Staff Code of Conduct](#).

As an equal opportunities employer, Ashlyns School is committed to the equal treatment of all current and prospective employees and does not condone discrimination on the basis of age, disability, sex, sexual orientation, pregnancy and maternity, race or ethnicity, religion or belief, gender identity, or marriage and civil partnership.

We aspire to have a diverse and inclusive workplace and strongly encourage suitably qualified applicants from a wide range of backgrounds to apply and join Ashlyns School.

We operate an anonymised shortlisting process.



ASHLYNS SCHOOL

