


# SPARKING GREATER POSSIBILITY




Your Expedition  
starts here






**30 YEARS EXPERIENCE**  
**44+ COUNTRIES VISITED**  
**OVER 12,000 TRIPS**  
**150,000+ STUDENTS**





# FOR PARENTS & STUDENTS



**We believe that overseas travel is one of the most empowering, life-altering forms of learning possible.**

We're passionate about what we do and have dedicated ourselves to the pursuit of creating unique school trips that educate, enrich and inspire the next generation.

For over 30 years, we've enabled transformative travel experiences right around the world. These experiences complement school learning, giving students the opportunity to become true life-learners and global citizens.

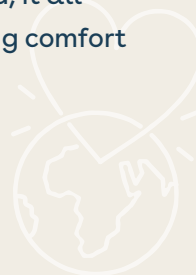
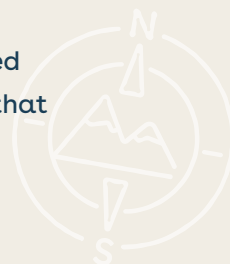
It's the kind of learning that you will carry with you long into the future, learning that can only come from experiencing this amazing planet and the unique cultures that inhabit it.

You'll have the opportunity to write your own stories, make your own mistakes, live your own adventures, learn and grow with peers and see the world with open eyes that are focused on those around you.

We've watched as these life changing experiences have brought out the best in our Challengers for many years, since 1987 in fact. It's perhaps best brought to life by our 150,000+ alumni that have returned home forever changed, many being inspired to continue the pursuit of positive global citizenship, from advocacy work in foreign nations through to leading world-shaping environmental initiatives.

We offer much more than a trip overseas. That said, it all begins with saying yes to adventure, yes to ignoring comfort zones, yes to embracing the unknown.

**A world of possibility awaits.**



LEARN TO LEAD

# EXPEDITIONS



## INSPIRING LEADERSHIP THROUGH BESPOKE, STUDENT- LED EXPEDITIONS

---

Your Expedition has been refined over 30 years of student travel, with an emphasis on developing tomorrow's leaders.

Students may experience a range of challenges, from venturing into barren landscapes, boldly tackling treks, handling budgets, shopping for supplies, and, at times, even booking their own accommodation.

During the Expedition students will also get the chance to positively contribute towards inspiring and ethical community-led initiatives that support the United Nations Development Goals.

With a focus on leadership, resilience, teamwork and responsible travel, students will walk away from this experience with an enriched view of self and a new found confidence to take on the world.

### WHY

---

INSPIRING LEADERSHIP

---

FAST-TRACKING REAL LIFE SKILLS

---

CROSS CULTURAL UNDERSTANDING  
AND EMPATHY

---

SELF-ESTEEM AND RESILIENCE

---

### HOW

---

TIME TO ALLOW STUDENTS TO  
MAKE DECISIONS

---

PARTICIPATION IN LEARNING-  
SERVICE INITIATIVES

---

VALUABLE COMMUNITY  
ENGAGEMENT

---

TREKKING AND ADVENTUROUS  
ACTIVITY

---

LOCAL STYLE TRAVEL AND  
ACCOMMODATION

---

### WHAT

---

14-28 NIGHT OVERSEAS  
EXPEDITION

---

STUDENTS LEAD THEIR TRIP  
BOOKING ACCOMMODATION,  
TRANSPORT AND FOOD

---

SUPERVISED BY BOTH SCHOOL  
AND WORLD CHALLENGE STAFF

---



THE BEST DECISION  
I'VE EVER MADE.  
IT TAUGHT ME TO  
TAKE CONTROL OF MY  
OWN LIFE

REMY MONAGHAN —STUDENT



# WE CARE ABOUT RESPONSIBLE TRAVEL

WE'RE EXPLORERS  
CURIOUS AND KIND

We base our responsible travel initiatives upon the **United Nations Sustainable Development Goals**.

We're driven to create positive contributions in the world, but also humble enough to know the types of community initiatives our Challengers should and shouldn't be involved with.

We carefully select all community engagements to be appropriate for Challengers and **we don't make claims we can't back up**.

This means you'll work towards a community initiative while also coming home with greater humility and sense of place in the world.

Below are some of the global goals we're working hard to support through our travels.



4 QUALITY EDUCATION



5 GENDER EQUALITY



6 CLEAN WATER AND SANITATION



8 DECENT WORK AND ECONOMIC GROWTH



13 CLIMATE ACTION



14 LIFE BELOW WATER

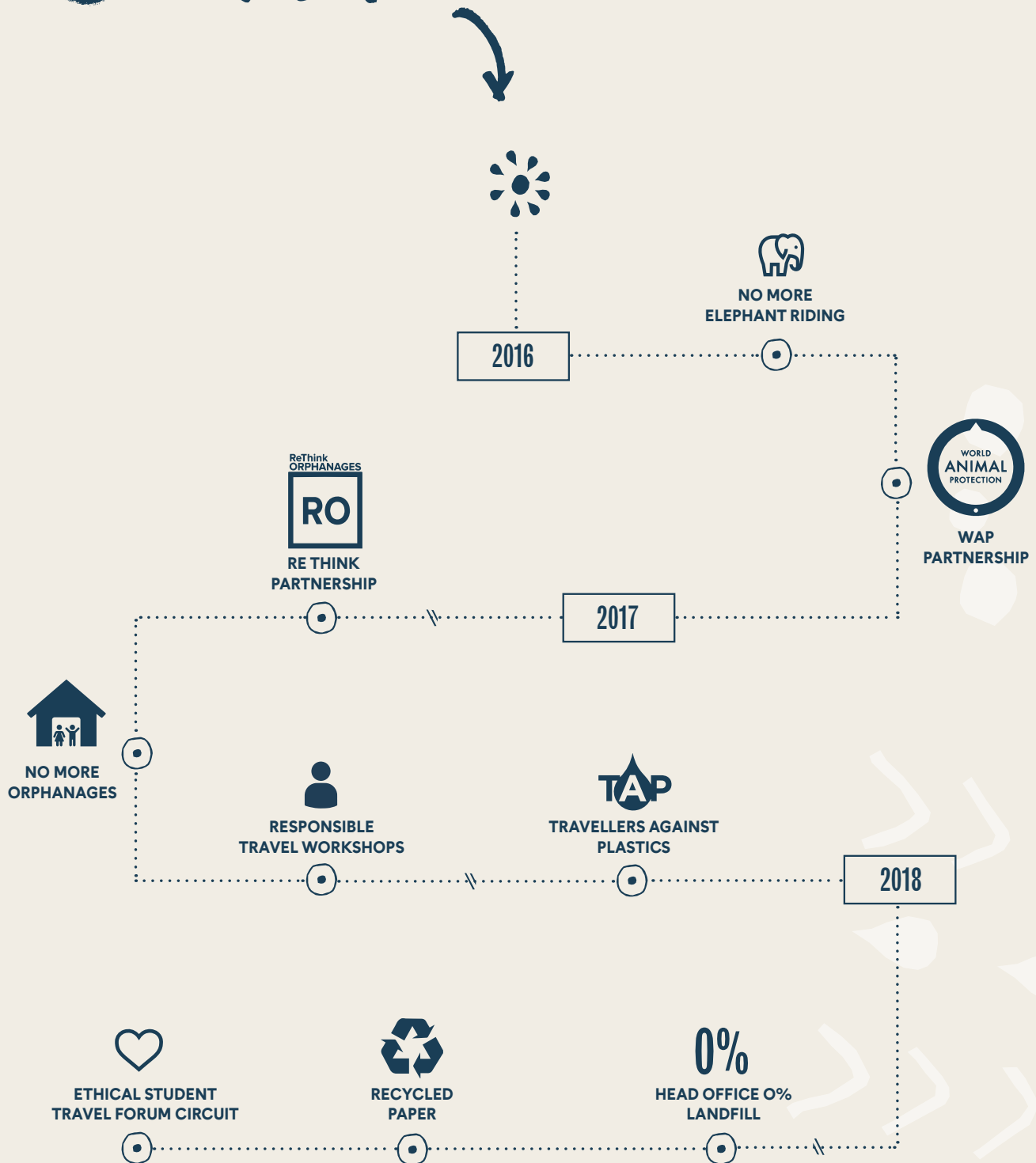



15 LIFE ON LAND



The **Sustainable Development Goals** are a collection of **17 global goals** set by the United Nations General Assembly in 2015 for the year **2030**.

# OUR JOURNEY SO FAR





**OUR INVESTMENT**  
**INTO SAFETY AND**  
**RISK MANAGEMENT**  
**IS UNMATCHED**  
**WORLDWIDE WITHIN**  
**THE STUDENT**  
**TRAVEL INDUSTRY**

# WE CARE ABOUT SAFETY

In the past few years alone we've invested more than **£550,000** into the **best safety and risk management systems available on the planet.**

We have a dedicated team of experts manning our operation centres in both hemispheres around the world.

**24 HOURS A DAY**  
**7 DAYS A WEEK**  
**365 DAYS A YEAR**

Our technologies integrate **real time government and private security advice** which informs all our planning and partnerships.

We've built a **unique auditing system to monitor the safety and professionalism of all of our in-country partners**; it's used to continually screen all pre-booked transport, accommodation and activities.

We're dedicated to the pursuit of safety and risk management above all else.

We're never leaving things to chance.

In our humble opinion,

**WE'RE TRULY BETTER  
THAN THE REST**



# WE CARE ABOUT YOU

## WHAT GEAR DO I NEED?



We'll provide group equipment like tents, comprehensive medical kits and safety equipment. You will need to provide your own personal kit such as sleeping bag, boots and clothes. We have partnerships with outdoor stores to give you advice and discounts.

## WHERE WILL I BE STAYING?



Not in 5 star hotels! Accommodation could be a tent, hostel, hammock or a local homestay. Embrace the experience.

## HOW FIT DO I NEED TO BE?



You don't need to be an Olympian, but yes, it can be tough. Get yourself fit so you can enjoy it even more. Some trips are self-sufficient so teams may need to carry their own backpack and kit.

## WHAT WILL WE EAT AND DRINK?



Now is your chance to try local cuisine as well as learn to cook for yourself. Most trips will have opportunities to try some self-catering as well as local restaurants. You will purify all your water to make sure it is safe to drink - we will provide you with purification tablets to do this.

## HOW WILL I RAISE THE MONEY?



Thousands of Challengers do this every year and we'll share their inspired guides on how to earn it. From part-time jobs like babysitting and car washing to cake sales, curry nights and Christmas cards. Head to [weareworldchallenge.com/uk/for-students](http://weareworldchallenge.com/uk/for-students) to meet some of our real-life entrepreneurs.

## HOW AM I SUPPORTED ALONG THE WAY?



We run meetings at school to prepare you for your trip. We'll get you working as a team, learning how to budget and sometimes planning aspects of your itinerary. If you do a Training Expedition, you'll be learning some of the practical skills you need for your trip.

## WHO WILL TRAVEL WITH US?



Every team is accompanied by an experienced and qualified World Challenge Leader as well as at least one teacher from their school.

## HOW DO WE GET AROUND?



Expect planes, trains, taxis, camels, boats and buses with endless opportunities to engage with the locals and soak up the scenery.

# EXPEDITION INCLUSIONS



- ✓ Return **economy flights** inc taxes
- ✓ **Comprehensive/premium travel insurance** throughout your trip
- ✓ Pre-departure meetings & **preparation support**
- ✓ **Training expedition** to get you ready for the real thing
- ✓ **Highly trained World Challenge Leader** to accompany you
- ✓ 24 hour **operations centre support**
- ✓ **In-country costs** (food, accommodation, transport etc)
- ✓ **Group kit** – Medical kits, satellite comms, tents, stoves, safety gear
- ✓ **Financial contribution** to local community initiatives

## EXCLUSIONS

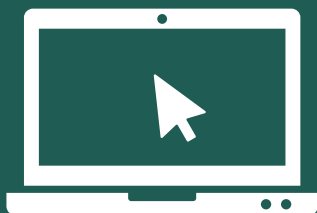
- ✗ **Vaccinations and visas**
- ✗ **Personal kit**
- ✗ Additional **optional activities**
- ✗ **Pre-departure** cancellation insurance
- ✗ Personal belonging insurance

## READY TO SIGN UP?

There are 2 ways of signing up to your World Challenge expedition:

1

**APPLY ONLINE** VIA  
**OURWORLDCHALLENGE.COM**  
USING YOUR BOOKING CODE



–OR–

2

**APPLY OFFLINE** VIA THE  
APPLICATION FORM



## QUESTIONS?

If you need any additional help or have any questions about your application form, contact our customer support team on +44 (0)1494 427600 or [customersupport@myworldchallenge.com](mailto:customersupport@myworldchallenge.com)



# FIND YOUR PLACE IN THE WORLD

**UK**

17-21 Queens Road  
High Wycombe  
Buckinghamshire HP13 6AQ

01494 427600

[customersupport@myworldchallenge.com](mailto:customersupport@myworldchallenge.com)

[weareworldchallenge.com](http://weareworldchallenge.com)